

EXTRAS BRIEF : **LADIES**

Manteca, California 1962

Season: Late summer/Early fall

3-4 options of clothing as period accurate as possible!

PLEASE SEE ATTACHED REFERENCES!!!!

SUGGESTED CLOTHING: High waisted jeans, pedal pushers, cropped cardis, cute shirts, dresses in 50's silhouette and/or slimmer silhouette, pencil skirts, cute sweaters, swing coats.

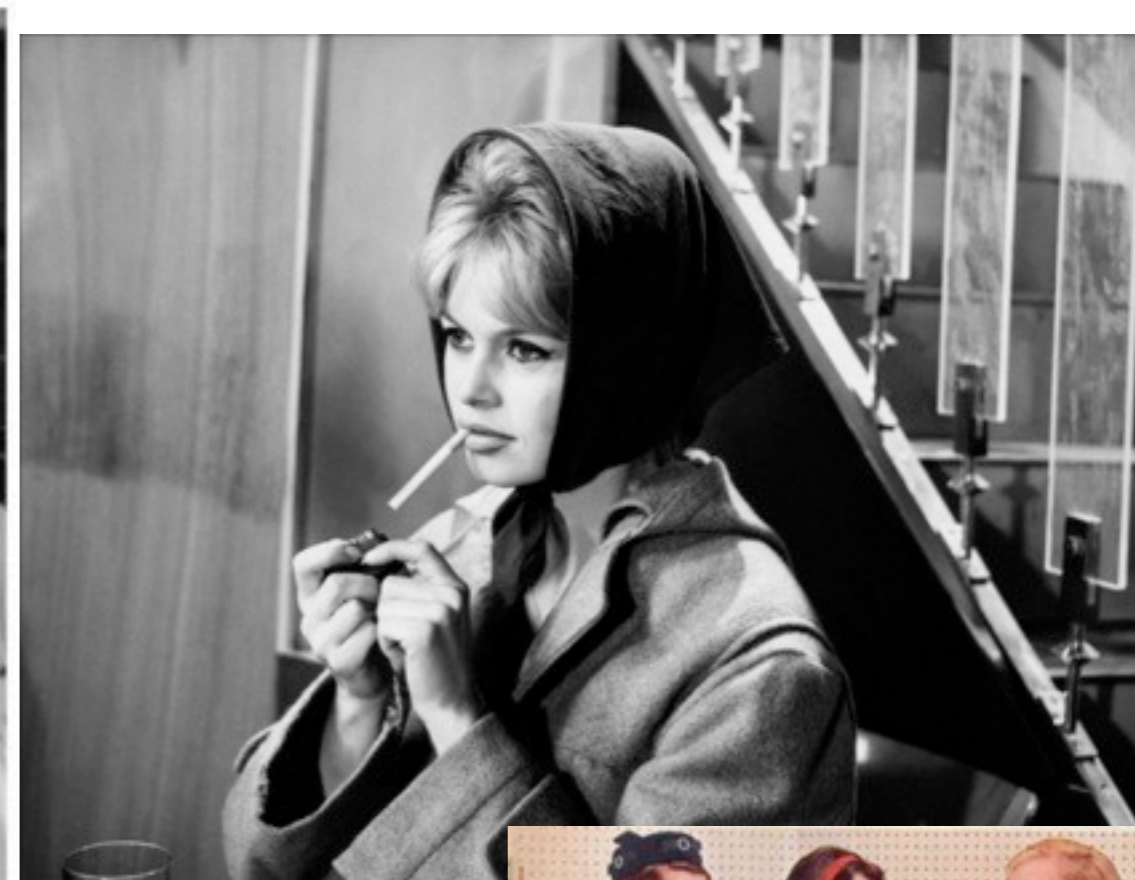
SUGGESTED SHOES: Ballet flats, pointy toed pumps (kitten or stiletto heel), Keds, Converse

SUGGESTED ACCESSORIES: Scarves, gloves, hats, bobby socks, tights, jewellery, specs, sunglasses.

- Color palette should be a mix of neutral and bright colors, please bring options of both. NO red or bright whites please. Avoid all black.
- NO large logos
- AVOID fine lines and small checks/dots (they will moray on screen). Big checks, large dots and widely spaced stripes are fine.

PLEASE COME DRESSED IN YOUR PREFERRED OPTION

PLEASE BRING A WARM COAT FOR NON SHOOTING PERIODS (this will not be provided by the costume department)



LIFE



AUGUST 28, 1944 **10** CENTS
YEARLY SUBSCRIPTION \$4.50

